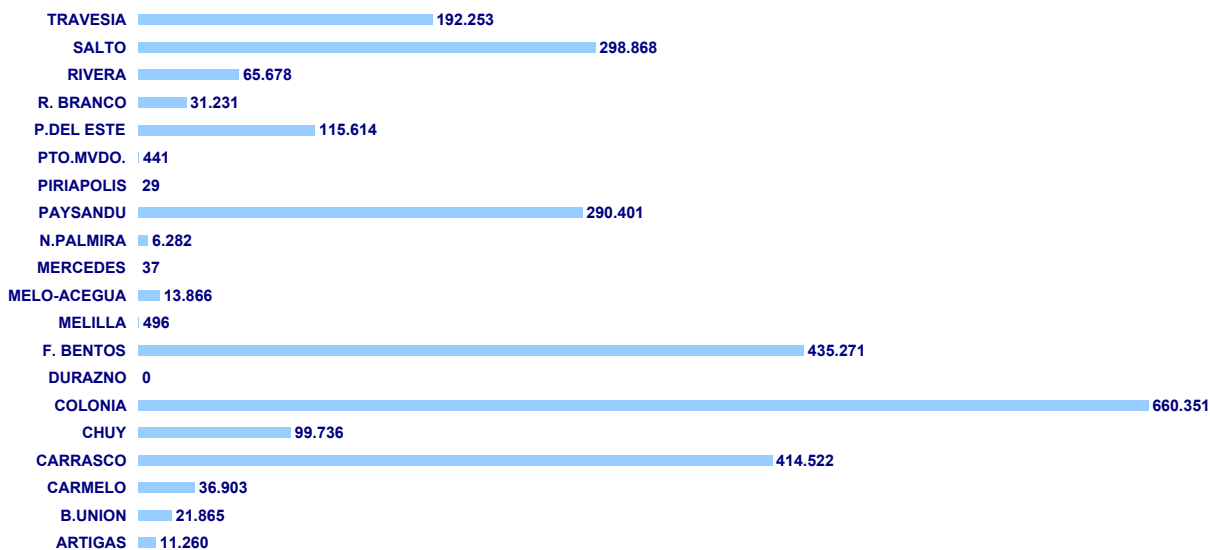


TEMPORARIOS INGRESADOS

CUADRO 6.01

	TOTAL	ENE	FEB	MAR	ABR	MAY	JUN	JUL	AGO	SET	OCT	NOV	DIC
PUNTOS	2.695.104	470.484	364.996	212.369	217.461	139.556	126.159	181.355	133.448	155.855	167.184	205.269	320.968
ARTIGAS	11.260	1.874	2.022	803	944	540	659	901	525	795	623	780	794
B.UNION	21.865	2.909	3.450	1.156	1.827	1.030	905	1.294	907	1.755	1.855	2.390	2.387
CARMELO	36.903	8.264	6.004	2.908	3.574	1.811	1.578	2.368	1.819	1.691	2.112	2.270	2.504
CARRASCO	414.522	43.036	45.084	42.680	37.781	32.759	30.900	24.938	24.771	24.745	30.664	34.909	42.255
CHUY	99.736	11.878	17.080	4.780	9.884	3.035	4.614	7.307	2.841	8.323	5.690	8.112	16.192
COLONIA	660.351	100.002	80.456	54.416	53.678	32.600	30.397	44.010	33.672	39.408	48.020	57.013	86.679
DURAZNO	0	0	0	0	0	0	0	0	0	0	0	0	0
F. BENTOS	435.271	96.681	58.779	32.285	30.567	16.998	12.862	28.955	17.039	21.878	23.479	29.910	65.838
MELILLA	496	46	41	61	44	21	22	7	27	50	49	86	42
MELO-ACEGUA	13.866	1.477	2.152	860	1.118	964	958	1.029	649	967	775	1.283	1.634
MERCEDES	37	27	1	5	0	0	0	0	2	0	0	2	0
N.PALMIRA	6.282	1.391	1.049	415	578	373	181	331	199	272	288	440	765
PAYSANDU	290.401	72.989	43.704	18.801	24.192	14.654	11.812	20.669	14.674	14.796	14.067	16.004	24.039
PIRIAPOLIS	29	1	6	0	4	3	4	0	0	1	10	0	0
PTO.MVDO.	441	44	17	33	16	18	11	36	25	138	24	12	67
P.DEL ESTE	115.614	29.763	22.473	10.739	7.743	4.492	2.772	3.723	2.817	4.141	3.805	7.080	16.066
R. BRANCO	31.231	3.682	4.664	1.750	2.464	1.153	2.090	2.788	1.086	2.403	1.917	2.891	4.343
RIVERA	65.678	18.341	19.231	4.845	3.938	1.879	1.966	3.350	1.502	2.254	2.214	2.617	3.541
SALTO	298.868	51.289	37.622	20.364	26.524	17.794	16.110	26.804	18.274	20.423	17.453	20.363	25.848
TRAVESIA	192.253	26.790	21.161	15.468	12.585	9.432	8.318	12.845	12.619	11.815	14.139	19.107	27.974

TEMPORARIOS INGRESADOS

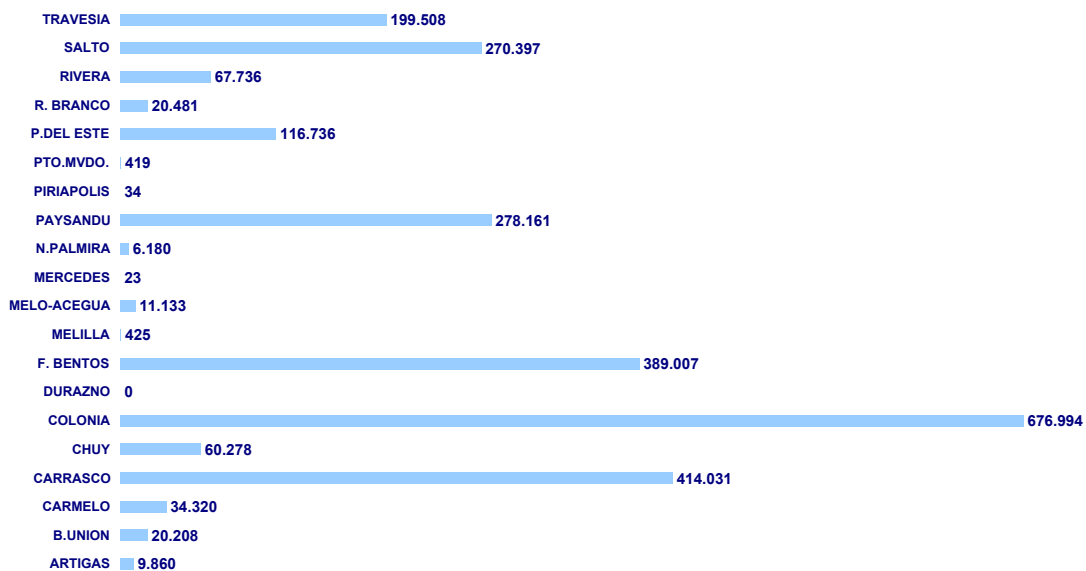


TEMPORARIOS EGRESADOS

CUADRO 6.02

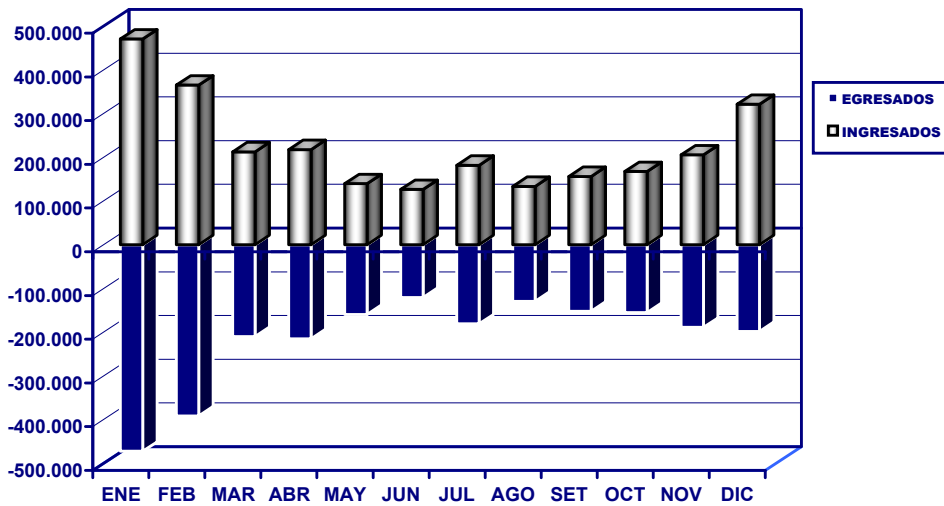
	TOTAL	ENE	FEB	MAR	ABR	MAY	JUN	JUL	AGO	SET	OCT	NOV	DIC
PUNTOS	2.575.931	472.697	391.579	210.281	215.278	159.396	120.669	181.167	129.697	152.129	155.373	189.200	198.465
ARTIGAS	9.860	2.243	1.082	660	607	653	559	817	521	657	524	731	806
B.UNION	20.208	3.223	3.284	1.068	1.604	1.226	841	1.177	785	1.660	1.606	2.314	1.420
CARMELO	34.320	7.651	6.180	2.630	2.910	1.874	1.407	2.411	1.679	1.649	2.001	2.183	1.745
CARRASCO	414.031	57.202	44.855	43.049	37.549	35.518	30.531	25.473	23.407	23.874	26.789	33.552	32.232
CHUY	60.278	10.627	10.403	3.377	4.671	3.065	2.505	4.139	1.903	6.918	3.316	4.828	4.526
COLONIA	676.994	109.813	97.919	55.002	58.033	41.204	29.807	49.395	35.956	42.369	46.663	55.702	55.131
DURAZNO	0	0	0	0	0	0	0	0	0	0	0	0	0
F. BENTOS	389.007	79.590	65.223	31.379	33.882	21.089	12.027	27.115	15.650	21.161	21.523	26.173	34.195
MELILLA	425	35	55	35	17	38	22	11	23	35	55	65	34
MELO-ACEGUA	11.133	1.509	1.874	742	785	995	843	800	486	842	623	984	650
MERCEDES	23	16	2	0	4	0	0	0	1	0	0	0	0
N.PALMIRA	6.180	1.505	1.049	358	486	683	193	255	178	246	296	387	544
PAYSANDU	278.161	58.678	54.267	19.181	25.232	16.137	11.634	20.855	14.248	14.186	13.701	14.590	15.452
PIRIAPOLIS	34	7	0	6	0	0	0	0	0	4	3	14	0
PTO.MVDO.	419	72	18	19	27	15	26	36	16	69	42	57	22
P.DEL ESTE	116.736	34.690	24.407	11.095	7.711	5.748	3.188	3.587	2.615	4.044	3.903	6.892	8.856
R. BRANCO	20.481	3.419	2.691	1.261	1.296	1.116	1.271	2.018	926	1.852	1.284	1.990	1.357
RIVERA	67.736	28.600	12.235	4.258	2.714	1.893	2.037	3.399	1.659	2.294	1.954	2.676	4.017
SALTO	270.397	44.208	36.750	18.677	23.039	17.351	14.854	24.638	17.024	18.346	16.598	18.921	19.991
TRAVESIA	199.508	29.609	29.285	17.484	14.711	10.791	8.924	15.041	12.620	11.923	14.492	17.141	17.487

TEMPORARIOS EGRESADOS



MES	INGRESADOS		EGRESADOS		FLUJO TOTAL	
	(N°)	(%)	(N°)	(%)	(N°)	(%)
TOTAL	2.695.104	100%	2.575.931	100%	5.271.035	100%
ENERO	470.484	17,5%	472.697	18,4%	943.181	17,9%
FEBRERO	364.996	13,5%	391.579	15,2%	756.575	14,4%
MARZO	212.369	7,9%	210.281	8,2%	422.650	8,0%
ABRIL	217.461	8,1%	215.278	8,4%	432.739	8,2%
MAYO	139.556	5,2%	159.396	6,2%	298.952	5,7%
JUNIO	126.159	4,7%	120.669	4,7%	246.828	4,7%
JULIO	181.355	6,7%	181.167	7,0%	362.522	6,9%
AGOSTO	133.448	5,0%	129.697	5,0%	263.145	5,0%
SETIEMBRE	155.855	5,8%	152.129	5,9%	307.984	5,8%
OCTUBRE	167.184	6,2%	155.373	6,0%	322.557	6,1%
NOVIEMBRE	205.269	7,6%	189.200	7,3%	394.469	7,5%
DICIEMBRE	320.968	11,9%	198.465	7,7%	519.433	9,9%

TEMPORARIOS INGRESADOS Y EGRESADOS DEL PAIS POR MES
AÑO 2012

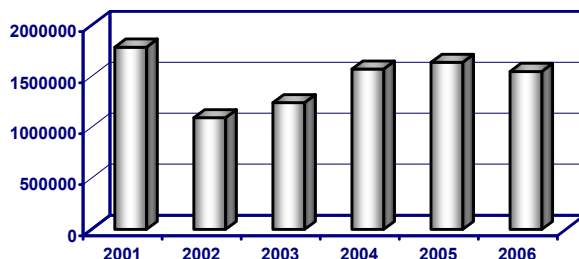


**COMPARATIVA TEMPORARIOS INGRESADOS AL PAIS
ANO 2001 - 2006
CUADRO 6.04**

TEMPORARIOS

2001	2002	2003	2004	2005	2006
1.788.719	1.095.372	1.243.238	1.573.583	1.639.089	1.549.124

COMPARATIVA DE TEMPORARIOS INGRESADOS AL PAIS AÑOS: 2001 - 2006

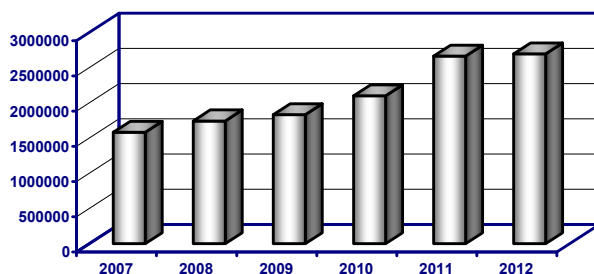


**COMPARATIVA TEMPORARIOS INGRESADOS AL PAIS
ANO 2007 - 2012
CUADRO 6.04**

TEMPORARIOS

2007	2008	2009	2010	2011	2012
1.580.353	1.742.794	1.831.062	2.099.555	2.663.297	2.695.104

COMPARATIVA DE TEMPORARIOS INGRESADOS AL PAIS AÑOS: 2007 - 2012

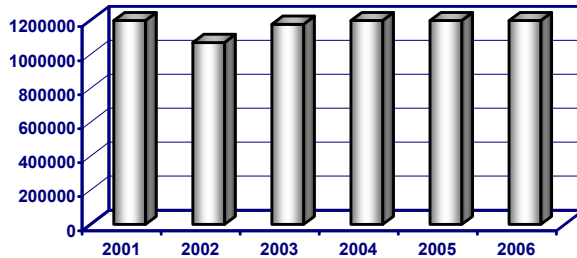


**COMPARATIVA TEMPORARIOS EGRESADOS AL PAIS
AÑO 2001 - 2006
CUADRO 6.05**

TEMPORARIOS

2001	2002	2003	2004	2005	2006
1.742.561	1.071.332	1.177.901	1.497.572	1.590.726	1.479.893

COMPARATIVA DE TEMPORARIOS EGRESADOS AL PAIS AÑOS: 2001 - 2006

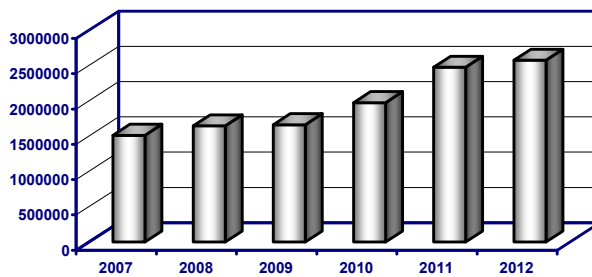


**COMPARATIVA TEMPORARIOS EGRESADOS AL PAIS
AÑO 2007 - 2012
CUADRO 6.05**

TEMPORARIOS

2007	2008	2009	2010	2011	2012
1.511.794	1.646.072	1.660.714	1.974.027	2.476.190	2.575.931

COMPARATIVA DE TEMPORARIOS EGRESADOS AL PAIS AÑOS: 2007 - 2012



TEMPORARIOS INGRESADOS CLASIFICADOS POR MES SEGÚN NACIONALIDAD CUADRO 6.06

NACIONALIDAD	TOTAL	ENE	FEB	MAR	ABR	MAY	JUN	JUL	AGO	SET	OCT	NOV	DIC
AFGANO	9	0	2	1	0	0	0	1	0	0	3	1	1
ALBANES	38	6	0	3	6	0	1	1	1	1	5	8	6
ALEMAN	18.565	2.379	2.470	2.492	1.477	816	679	832	867	1.071	1.373	1.857	2.252
ANDORRANA	85	12	8	8	7	6	1	5	4	1	9	9	15
ANGOLEÑA	51	1	6	2	7	2	0	2	2	2	7	4	16
ARABE	52	1	4	0	6	5	16	0	8	3	6	2	1
ARGELINO	24	9	0	2	1	0	0	0	1	2	2	3	4
ARGENTINA	1.832.514	365.617	264.069	139.294	143.233	88.773	74.669	121.426	88.581	99.415	104.933	126.795	215.709
ARMENIA	213	1	5	7	9	1	2	1	0	4	163	14	6
AUSTRALIANA	7.449	1.013	951	849	626	387	379	368	332	395	698	625	826
AUSTRIACA	2.879	371	552	312	162	131	85	124	119	110	178	380	355
AZERI	19	0	0	6	1	2	1	5	2	0	0	2	0
BAHAMENA	40	2	2	6	0	2	3	2	0	4	4	4	11
BAHREINI	5	0	0	1	0	0	1	0	0	0	0	2	1
BARBADENSE	30	1	2	8	2	1	0	2	2	0	4	5	3
BARBUDANA	10	1	0	0	2	1	1	0	0	2	1	2	0
BASUTO	1	0	0	0	0	0	0	0	0	0	0	0	1
BELAU	5	0	2	0	0	0	0	0	1	0	0	1	1
BELGA	2.716	274	295	364	246	118	113	114	128	141	230	323	370
BELICENA	66	56	0	1	0	1	1	3	0	1	0	0	3
BENGLI	13	0	1	0	0	0	6	0	0	3	1	2	0
BERMUDANA	2	0	0	0	0	0	0	0	0	0	0	0	2
BIELORUSA	15	1	3	0	0	4	0	2	1	1	2	1	0
BIRMANA	1	0	0	0	0	0	0	0	0	0	0	1	0
BOLIVIANA	5.098	623	559	401	299	286	255	345	341	308	425	528	728
BOSNIO	129	0	0	0	2	33	20	0	33	4	33	2	2
BOTSWANO	3	0	0	0	0	0	2	0	0	0	0	0	1
BRASILEÑA	406.311	47.010	49.564	27.841	39.594	23.611	26.895	34.004	19.114	29.191	26.409	35.179	47.899
BRITANICA	13.758	2.044	1.734	1.512	1.178	684	526	650	587	635	976	1.356	1.876
BRUNEANO	3	0	0	0	0	0	0	1	0	0	0	2	0
BULGARA	386	68	34	23	20	43	14	17	9	21	22	66	49
BURKINES	4	0	1	0	0	0	1	0	0	0	1	1	0
BURUNDIANO	11	8	1	0	0	0	1	0	0	0	1	0	0
BUTANES	4	0	0	0	0	0	0	1	0	0	3	0	0
CABOVERDIANA	1	0	0	0	0	0	0	0	0	0	1	0	0
CAIMANES	1	0	0	0	0	0	0	0	0	1	0	0	0
CAMBOYANA	1	0	0	0	0	1	0	0	0	0	0	0	0
CAMERUNESA	26	2	1	0	1	0	1	4	0	0	2	13	2
CANADIENSE	9.589	1.339	1.416	1.317	673	458	301	353	294	305	665	1.076	1.392
CHADIANA	1	0	0	0	0	0	1	0	0	0	0	0	0
CHECA	996	105	70	81	131	61	49	44	78	62	107	95	113
CHILENA	58.132	7.031	10.900	5.305	4.052	3.694	2.739	3.328	3.472	3.874	4.181	4.138	5.418
CHINA	1.670	79	82	119	85	112	124	117	197	225	193	160	177
CHINA-TAI	91	5	9	8	5	9	4	4	7	11	6	11	12
CHIPRIOTA	39	10	1	1	1	0	2	2	1	3	10	4	4
CINGALES	2	0	0	0	0	0	1	1	0	0	0	0	0
COLOMBIANA	29.535	4.150	1.617	2.193	2.206	1.673	1.812	1.988	1.638	1.844	3.138	3.293	3.983
COMORENSE	2	0	0	0	0	0	0	1	0	0	0	0	1
CONGOLEÑA	17	0	1	0	2	0	1	1	1	1	6	3	1
COREANA	2.964	250	262	243	259	173	172	245	191	218	314	348	289
COREANA R.P.D.	14	0	1	0	6	0	1	0	0	1	2	2	1
COSTARRICENSE	2.422	395	107	203	175	155	89	200	112	156	305	233	292
CROATA	447	18	13	47	8	23	19	39	19	39	98	89	35
CUBANA	677	39	35	54	59	41	49	56	71	50	77	68	78
DANESA	2.021	374	373	341	170	80	75	66	35	66	125	149	167
DOMINICA	15	0	0	1	0	7	0	1	0	2	1	2	1
DOMINICANA	1.285	64	101	170	85	107	108	103	82	86	124	148	107
ECUATORIANA	8.233	453	527	847	758	595	614	545	609	1.008	842	798	637
EGIPCIA	114	2	7	8	34	8	4	5	6	6	5	24	5
ERITREA	6	3	0	0	0	0	0	0	0	0	3	0	0
ESLOVACA	771	71	45	39	33	77	39	66	121	42	65	128	45
ESLOVENA	202	16	13	26	7	10	7	17	10	17	33	35	11
ESPAÑOLA	31.735	3.291	3.093	3.167	2.387	1.728	1.493	2.002	2.205	2.101	2.526	3.639	4.103
ESTADOUNIDENSE	57.962	6.095	5.819	7.192	4.051	3.548	3.607	3.257	2.836	2.648	4.165	5.892	8.852
ESTONIO	277	7	18	19	18	6	17	15	13	5	30	103	26
ETIOPE	7	0	1	0	0	1	2	0	0	1	0	2	0
FIJIANA	1	0	0	0	0	0	0	0	0	1	0	0	0
FILIPINA	169	11	12	11	10	13	9	20	32	5	18	12	16
FINLANDESA	3.305	282	361	290	247	150	175	178	185	157	359	437	484
FRANCESA	17.797	2.003	2.309	1.849	1.509	1.028	751	1.058	907	822	1.311	1.850	2.400
GABONES	2	0	0	0	0	0	1	0	0	0	0	0	1
GAMBIANA	2	0	0	0	0	0	1	0	0	0	0	1	0
GEORGIANO	6	0	0	1	0	0	1	0	1	1	2	0	0
GHANES	22	0	3	0	0	1	0	0	0	1	15	2	0
GRANADINO	11	0	0	0	0	2	0	0	0	0	0	7	2
GRIEGA	725	77	94	78	66	44	36	25	62	28	62	53	100
GUATEMALTECA	1.138	59	53	99	70	77	86	67	84	103	122	147	171
GUINEA	3	0	0	0	0	2	0	0	0	0	1	0	0
GUINEANA	3	1	0	0	0	0	0	0	1	0	1	0	0
GUYANES	15	1	0	2	3	1	2	1	0	0	3	1	1

TEMPORARIOS INGRESADOS CLASIFICADOS POR MES SEGÚN NACIONALIDAD CUADRO 6.06

NACIONALIDAD	TOTAL	ENE	FEB	MAR	ABR	MAY	JUN	JUL	AGO	SET	OCT	NOV	DIC
HAITIANA	91	5	7	11	13	9	5	9	9	2	9	1	11
HOLANDESA	5.060	764	551	484	338	241	162	239	202	229	450	615	785
HONDUREÑA	507	33	38	43	22	43	12	27	35	52	71	57	74
HONG KONG	121	18	20	10	5	9	14	6	7	13	6	9	4
HUNGARA	523	64	79	82	34	27	16	18	13	23	47	82	38
INDIA	903	47	73	119	48	86	57	53	69	102	100	82	67
INDONESIA	140	3	51	9	5	8	6	8	4	3	8	29	6
IRANI	79	3	6	12	7	6	10	10	6	2	5	8	4
IRAQUI	10	1	0	0	0	0	6	0	0	1	1	0	1
IRLANDESA	1.897	212	220	151	143	86	91	130	117	117	199	206	225
ISLANDESA	123	27	19	4	22	10	7	3	0	3	4	11	13
ISRAELITA	3.379	487	406	317	311	189	123	198	210	224	228	257	429
ITALIANA	18.227	2.434	1.956	1.615	1.282	891	827	989	1.229	930	1.325	1.884	2.865
JAMAQUINA	66	3	3	10	6	1	3	4	2	8	9	11	6
JAPONESA	3.232	245	249	341	223	301	223	179	216	270	282	362	341
JORDANA	47	2	3	6	3	8	5	0	2	7	5	1	5
KAZAJO	32	2	1	4	2	4	1	2	1	1	6	0	8
KENIATA	31	1	3	1	0	0	6	0	1	1	13	1	4
KIRGUIZO	4	0	0	0	0	0	1	0	0	0	3	0	0
KIRIBATIANO	1	0	0	0	0	0	1	0	0	0	0	0	0
KUWAITI	6	0	2	0	0	0	3	0	0	0	1	0	0
LAOSIANA	1	0	0	0	0	1	0	0	0	0	0	0	0
LETONA	106	8	5	24	7	5	3	7	12	1	3	11	20
LIBANESA	95	3	10	7	2	3	5	3	6	3	42	5	6
LIBERIANA	1	0	0	0	0	0	0	0	0	0	1	0	0
LIBIA	5	0	0	0	0	0	0	0	4	0	1	0	0
LIECHTENSTIENSE	24	5	5	1	3	1	0	0	0	0	2	2	5
LITUANA	150	15	12	14	6	13	11	2	8	12	18	22	17
LUXEMBURGUESA	84	7	4	19	6	2	3	3	0	5	3	16	16
MACEDONIA	16	1	0	0	1	1	1	2	1	3	1	2	3
MALAWIANA	4	0	0	0	0	0	0	0	0	1	3	0	0
MALAYA	303	16	19	37	25	12	11	17	28	43	22	23	50
MALGACHE	2	0	0	0	0	0	1	0	0	0	0	1	0
MALIENSE	4	0	1	1	0	0	2	0	0	0	0	0	0
MALTESA	67	2	11	4	2	1	0	2	3	7	5	5	25
MARFILEÑA	3	0	0	0	0	0	2	0	0	0	1	0	0
MARROQUI	56	1	3	1	3	8	3	3	1	3	11	5	14
MAURICIANA	5	0	1	0	0	0	1	0	0	0	3	0	0
MAURITANA	3	1	0	0	0	0	1	0	0	0	1	0	0
MEXICANA	14.282	1.315	838	1.305	1.388	1.030	742	1.133	893	962	1.342	1.517	1.817
MOLDAVO	11	0	3	0	0	1	2	2	1	0	0	1	1
MONEGASCA	17	1	1	2	2	1	0	0	0	2	1	1	6
MONGOL	1	0	0	0	0	0	0	0	0	0	0	0	1
MONTENEGRINO	5	4	0	0	0	0	0	0	0	0	0	0	1
MOZAMBIQUEÑA	13	1	2	1	0	1	1	0	0	4	3	0	0
NAURUANA	1	0	0	0	0	0	0	1	0	0	0	0	0
NEOCELANDESA	1.875	178	161	173	165	175	100	87	110	273	177	139	137
NEPALES	12	0	0	0	0	1	0	0	2	4	3	1	1
NICARAGUENSE	416	28	23	68	39	49	19	24	21	29	39	29	48
NIGERIANA	129	4	4	6	4	8	17	4	12	8	19	27	16
NIGERINA	4	0	0	1	1	0	0	0	0	1	0	1	0
NORUEGA	2.117	252	338	319	174	67	55	62	47	62	205	236	300
OMANI	6	0	0	0	1	0	3	0	0	0	0	2	0
PAKISTANI	36	6	6	3	3	2	5	3	2	1	2	1	2
PALESTINO	16	4	4	0	2	0	0	0	0	3	2	0	1
PANAMEÑA	1.535	115	128	184	105	88	103	113	125	110	157	156	151
PAPU	1	0	0	0	0	0	0	0	0	0	1	0	0
PARAGUAYA	42.682	9.225	4.235	2.821	2.814	2.521	2.183	2.699	2.091	2.466	2.551	3.036	6.040
PERUANA	15.359	1.454	1.193	1.473	1.136	1.120	1.309	1.169	1.142	938	1.459	1.347	1.619
POLACA	2.169	213	246	223	117	93	65	88	80	84	196	465	299
PORTORRIQUEÑA	42	8	0	5	2	6	10	1	0	0	1	3	6
PORTUGUESA	3.116	320	269	299	270	203	153	124	217	206	339	356	360
QATARI	5	0	0	0	0	0	4	0	0	1	0	0	0
RL EN ARGENTINA	16.768	3.699	3.151	2.169	1.953	1.358	1.124	502	349	783	466	536	678
RUANDES	4	0	0	0	0	0	1	0	0	0	1	2	0
RUMANA	694	125	103	81	48	19	15	41	61	27	66	43	65
RUSA	2.310	249	184	219	232	195	85	96	109	135	182	264	360
SALOMONENSE	2	0	0	0	0	0	0	0	0	0	2	0	0
SALVADOREÑA	806	28	56	81	63	46	36	58	58	59	102	122	97
SAMOANA	2	0	0	0	0	0	1	0	0	0	1	0	0
SAN KITTS	10	0	0	0	0	2	1	0	0	1	1	4	1
SANMARINENSE	2	1	0	0	0	0	0	0	0	0	0	0	1
SANTALUCENSE	14	0	0	0	1	4	1	0	0	1	1	6	0
SANTOMENSE	6	0	2	1	0	1	0	0	0	0	0	2	0
SANVICENTINO	4	0	1	0	1	0	0	0	0	0	1	1	0
SAUDI	4	1	0	3	0	0	0	0	0	0	0	0	0
SENEGALES	28	1	3	1	0	2	2	4	5	1	8	0	1
SERBIA	306	16	21	27	14	6	1	3	23	29	99	42	25
SEYCHELLENSE	3	0	0	0	0	0	1	0	0	0	1	0	1
SIERRALEONES	1	0	0	0	0	0	0	0	0	0	1	0	0
SINGAPURENSE	161	5	4	15	17	9	17	8	15	13	18	21	19

TEMPORARIOS INGRESADOS CLASIFICADOS POR MES SEGÚN NACIONALIDAD CUADRO 6.06

NACIONALIDAD	TOTAL	ENE	FEB	MAR	ABR	MAY	JUN	JUL	AGO	SET	OCT	NOV	DIC
SIRIA	28	3	3	1	1	1	1	6	1	4	3	3	1
SUAZILANDESA	107	5	2	22	25	12	10	3	1	1	5	14	7
SUDAFRICANA	1.285	112	103	128	153	47	92	64	73	72	109	109	223
SUDANESA	7	1	0	0	0	2	3	0	0	0	1	0	0
SUECA	4.582	847	751	545	324	136	85	113	91	128	247	469	846
SUIZA	6.355	821	906	665	630	250	214	224	221	279	517	683	945
SURINAMES	16	1	0	3	0	0	1	0	0	2	8	0	1
TAILANDESA	69	4	7	22	1	3	3	4	2	3	9	6	5
TAJIKO	5	0	0	0	0	0	1	0	0	1	2	1	0
TANZANO	10	0	0	0	0	0	5	0	0	0	3	1	1
TOGOLES	3	0	0	0	0	0	0	0	0	0	2	0	1
TONGANA	2	0	0	0	0	0	0	0	0	2	0	0	0
TRINITARIA	96	9	5	13	15	4	2	4	2	8	10	16	8
TUNECINA	10	0	1	0	0	1	1	0	0	1	4	0	2
TURCA	925	30	76	138	72	38	45	52	47	52	131	105	139
TURCOMANOS	297	6	80	16	8	3	33	20	6	59	5	28	33
TUVALUANO	2	0	0	0	0	0	1	0	0	0	1	0	0
UCRANIANA	182	11	18	34	18	9	8	9	14	14	9	17	21
UGANDESA	8	0	0	0	0	0	2	0	0	0	5	0	1
UZBEKO	8	0	0	0	0	0	1	0	0	0	5	2	0
VANUATUENSE	1	0	0	0	0	0	0	0	0	1	0	0	0
VENEZOLANA	17.720	1.235	698	1.127	1.148	1.282	1.902	1.005	2.035	1.754	1.359	1.607	2.568
VIETNAMITA	23	4	0	3	3	2	0	0	1	0	5	1	4
YEMENI	1	0	0	0	0	0	1	0	0	0	0	0	0
YUGOSLAVA	11	1	2	0	3	0	2	0	2	0	0	0	1
ZAMBIANA	1	0	0	0	0	0	1	0	0	0	0	0	0
ZIMBABUENSE	4	0	1	1	0	0	1	0	0	0	1	0	0

TEMPORARIOS EGRESADOS CLASIFICADOS POR MES SEGÚN NACIONALIDAD

CUADRO 6.07

NACIONALIDAD	TOTAL	ENE	FEB	MAR	ABR	MAY	JUN	JUL	AGO	SET	OCT	NOV	DIC
AFGANO	8	3	2	1	0	0	0	1	0	1	0	0	0
ALBANES	41	11	10	4	5	1	1	2	0	2	2	2	1
ALEMAN	20.174	2.703	2.393	2.772	1.772	988	738	914	939	1.093	1.567	2.161	2.134
ANDORRANA	84	17	7	7	11	6	1	4	3	2	8	8	10
ANGOLEÑA	60	19	8	3	4	5	0	4	2	1	2	6	6
ARABE	54	0	5	6	3	7	2	11	0	11	6	1	2
ARGELINO	22	10	0	4	1	0	0	0	1	1	1	1	3
ARGENTINA	1.760.743	350.832	297.132	134.988	146.139	103.983	71.405	122.905	86.546	97.632	101.364	117.273	130.544
ARMENIA	205	3	8	5	8	3	1	5	0	1	159	5	7
AUSTRALIANA	7.573	1.143	983	973	692	453	353	353	322	395	626	610	670
AUSTRIACA	2.499	359	305	291	193	125	108	123	113	100	143	343	296
AZERI	9	0	0	5	0	0	0	3	0	0	0	1	0
BAHAMENA	38	2	3	6	0	2	2	4	0	3	4	3	9
BAHREINI	2	0	0	1	0	0	0	1	0	0	0	0	0
BARBADENSE	26	2	4	3	2	1	0	2	1	2	2	5	2
BARBUDANA	7	0	1	0	1	1	0	1	0	1	1	1	0
BASUTO	1	0	0	0	0	0	0	1	0	0	0	0	0
BELAU	2	0	0	0	0	0	0	2	0	0	0	0	0
BELGA	2.879	399	357	336	289	135	127	133	128	148	202	307	318
BELICENA	11	0	0	0	1	1	1	2	0	2	0	0	4
BENGLI	7	1	0	0	0	0	0	1	0	2	0	3	0
BERMUDANA	2	0	0	0	0	0	0	0	0	0	0	0	2
BIELORUSA	13	1	4	1	0	1	0	1	1	1	1	2	0
BOLIVIANA	4.977	716	428	447	341	326	279	394	367	267	392	486	534
BOSNIO	73	0	0	0	2	2	5	1	1	5	2	8	47
BOTSWANO	4	2	1	0	0	0	0	1	0	0	0	0	0
BRASILEÑA	358.115	57.339	41.063	25.787	31.100	26.309	24.153	31.340	17.742	27.426	22.130	30.310	23.416
BRITANICA	13.642	1.973	1.738	1.732	1.333	759	588	634	635	632	866	1.337	1.415
BRUNEANO	3	0	1	0	0	0	0	0	0	0	0	2	0
BULGARA	407	82	43	36	24	44	11	16	14	11	25	46	55
BURKINES	5	0	1	1	0	0	0	0	0	0	1	2	0
BURUNDIANO	3	0	0	0	1	0	0	0	0	1	0	1	0
BUTANES	4	0	0	0	0	0	0	0	0	0	3	1	0
CAOVERDIANA	4	0	0	0	0	0	0	1	0	0	3	0	0
CAIMANES	2	0	0	0	2	0	0	0	0	0	0	0	0
CAMBOYANA	3	0	0	1	0	1	1	0	0	0	0	0	0
CAMERUNESA	17	1	1	1	1	0	0	3	1	0	1	7	1
CANADIENSE	9.617	1.546	1.340	1.561	779	520	343	394	306	269	568	971	1.020
CENTROAFRICANO	1	0	0	0	1	0	0	0	0	0	0	0	0
CHADIANA	1	0	0	0	0	0	0	0	0	0	0	1	0
CHECA	876	54	69	80	106	31	42	57	41	78	85	77	156
CHILENA	57.415	5.913	11.110	6.363	3.901	4.069	2.737	3.415	3.539	3.975	3.708	4.272	4.413
CHINA	1.432	97	106	93	86	88	131	122	112	175	143	139	140
CHINA-TAI	100	13	10	12	3	8	5	6	9	12	4	10	8
CHIPRIOTA	44	10	3	4	1	1	1	1	1	3	10	4	5
CINGALES	2	0	0	0	0	0	1	1	0	0	0	0	0
COLOMBIANA	29.759	4.586	1.634	2.148	2.490	1.797	1.835	2.097	1.539	1.880	3.006	3.237	3.510
CONGOLEÑA	13	1	2	0	3	1	0	1	0	0	1	2	2
COREANA	3.028	336	331	261	237	187	166	226	206	213	213	311	341
COREANA R.P.D.	7	0	2	1	0	1	0	0	0	0	0	2	1
COSTARRICENSE	2.450	386	117	202	193	167	91	265	108	154	278	240	249
CROATA	406	35	30	46	18	14	12	19	27	29	29	22	125
CUBANA	600	47	44	48	53	65	48	37	61	37	47	57	56
DANESA	1.999	371	378	340	179	100	74	78	42	62	123	126	126
DJIBOUTI	1	0	0	0	0	0	1	0	0	0	0	0	0
DOMINICA	11	0	4	0	0	4	0	0	0	2	1	0	0
DOMINICANA	1.138	103	81	157	81	90	102	99	66	81	70	114	94
ECUATORIANA	8.104	416	470	777	784	633	651	515	595	1.107	765	824	567
EGIPCIA	116	4	8	12	33	10	4	3	5	9	2	5	21
ERITREA	2	0	2	0	0	0	0	0	0	0	0	0	0
ESLOVACA	775	72	35	33	33	25	30	70	72	69	85	91	160
ESLOVENA	229	16	43	28	5	4	7	15	7	12	29	38	25
ESPAÑOLA	31.466	3.926	3.096	3.728	2.761	1.976	1.770	2.030	2.100	1.886	2.057	2.908	3.228
ESTADOUNIDENSE	58.051	8.220	5.786	7.318	4.814	3.812	3.531	3.592	2.899	2.634	3.725	5.663	6.057
ESTONIO	257	17	19	24	11	7	23	12	8	9	16	79	32
ETIOPE	11	1	1	0	0	1	0	2	0	1	0	3	2
FILIPINA	147	6	14	20	14	18	10	7	7	10	6	25	10
FINLANDESA	3.176	270	311	356	214	133	200	149	128	153	269	382	611
FRANCESA	17.897	2.252	2.170	2.228	1.671	1.182	846	1.002	938	886	1.066	1.726	1.930
GABONES	2	0	1	0	0	0	0	1	0	0	0	0	0
GAMBIANA	2	0	0	0	1	0	0	0	0	0	1	0	0
GEORGIANO	18	0	0	1	9	1	0	1	1	0	2	2	1
GHANES	17	0	2	2	0	1	0	0	0	1	0	9	2
GRANADINO	9	1	0	0	0	2	0	0	1	0	0	0	5
GRIEGA	732	113	65	102	74	43	38	25	69	34	58	50	61
GUATEMALTECA	1.182	110	46	116	100	73	86	74	80	88	109	131	169
GUINEA	1	0	0	0	0	0	0	0	1	0	0	0	0
GUINEANA	3	1	0	0	0	0	0	0	0	0	1	1	0
GUYANES	13	1	0	3	2	0	1	2	1	0	1	1	1
HAITIANA	100	4	7	21	14	9	5	9	7	4	4	6	10

	TOTAL	ENE	FEB	MAR	ABR	MAY	JUN	JUL	AGO	SET	OCT	NOV	DIC
HOLANDESA	5.327	908	652	574	435	259	206	244	215	255	353	596	630
HONDUREÑA	504	50	23	45	36	41	21	22	35	48	68	51	64
HONG KONG	105	7	16	10	6	5	11	5	11	6	11	9	8
HUNGARA	499	61	81	72	39	27	12	22	18	23	26	80	38
INDIA	855	57	60	118	59	75	55	50	59	72	66	119	65
INDONESIA	146	0	1	9	6	3	18	9	6	8	3	30	53
IRANI	83	7	4	11	9	4	10	14	5	4	0	9	6
IRAQUI	13	1	1	3	0	0	1	5	0	0	0	0	2
IRLANDESA	1.978	252	218	190	154	122	71	153	127	112	177	228	174
ISLANDESA	110	7	13	12	19	11	8	4	3	3	3	16	11
NACIONALIDAD	TOTAL	ENE	FEB	MAR	ABR	MAY	JUN	JUL	AGO	SET	OCT	NOV	DIC
ISRAELITA	3.470	542	497	391	311	185	124	183	231	249	189	228	340
ITALIANA	19.005	3.164	2.270	2.078	1.519	1.225	936	1.046	1.191	1.031	1.134	1.665	1.746
JAMAQUINA	61	3	3	10	3	2	2	5	2	8	6	10	7
JAPONESA	3.447	278	296	454	229	307	228	192	238	275	275	359	316
JORDANA	49	2	2	2	2	10	2	5	5	4	6	4	5
KAZAJO	33	4	1	5	3	4	1	2	1	3	4	4	1
KENIATA	31	3	3	1	0	0	1	4	1	1	2	13	2
KIRGUIZO	4	0	0	0	0	0	0	1	0	0	0	3	0
KIRIBATIANO	1	0	0	0	0	0	0	1	0	0	0	0	0
KUWAITI	12	5	1	0	1	0	0	3	0	1	0	1	0
LAOSIANA	2	0	0	0	0	1	0	1	0	0	0	0	0
LETONA	102	7	4	24	10	5	4	7	9	2	3	11	16
LIBANESA	87	5	8	6	3	4	4	3	7	3	31	11	2
LIBERIANA	2	0	0	0	0	0	0	0	1	0	0	1	0
LIBIA	3	1	0	0	0	0	1	1	0	0	0	0	0
LIECHTENSTIENSE	28	8	5	4	2	1	0	0	0	0	2	1	5
LITUANA	159	20	19	14	9	10	3	5	9	12	11	15	32
LUXEMBURGUESA	83	12	2	12	8	5	0	4	8	5	3	16	8
MACEDONIA	15	3	0	0	5	0	0	1	1	2	1	0	2
MALAWIANA	5	0	1	1	0	0	0	0	0	1	0	2	0
MALAYA	339	36	22	48	23	16	19	20	27	42	20	23	43
MALDIVA	2	0	1	0	0	1	0	0	0	0	0	0	0
MALIENSE	3	0	0	1	0	0	0	2	0	0	0	0	0
MALTESA	62	6	8	7	5	3	0	2	3	5	3	3	17
MARFILEÑA	5	0	0	0	0	0	0	3	1	0	1	0	0
MARROQUI	45	4	5	4	3	4	2	4	1	2	4	8	4
MARSHALLES	1	0	0	0	0	0	0	1	0	0	0	0	0
MAURICIANA	7	2	1	0	0	0	0	1	0	0	1	2	0
MAURITANA	2	1	0	0	1	0	0	0	0	0	0	0	0
MEXICANA	14.466	1.628	815	1.321	1.510	1.123	803	1.179	879	962	1.239	1.454	1.553
MOLDAVO	8	0	3	1	0	0	0	3	1	0	0	0	0
MONEGASCA	16	4	1	2	2	1	0	0	0	1	0	2	3
MONTENEGRINO	4	1	2	0	0	0	0	1	0	0	0	0	0
MOZAMBIQUEÑA	11	2	2	1	0	1	0	1	0	1	1	2	0
NAMIBIA	3	0	0	0	0	0	0	0	0	0	0	0	3
NAURUANA	1	0	0	0	0	0	0	1	0	0	0	0	0
NEOCLANDESA	1.887	238	123	175	169	170	92	96	104	284	158	141	137
NEPALES	13	0	0	0	0	1	0	0	2	5	1	4	0
NICARAGUENSE	395	20	28	41	49	54	19	23	26	30	38	32	35
NIGERIANA	125	5	4	5	2	10	6	16	10	10	15	24	18
NIGERINA	3	0	0	0	0	0	0	0	0	0	0	3	0
NORUEGA	2.280	386	293	409	254	69	64	88	50	59	188	210	210
OMANI	9	0	1	0	0	0	5	3	0	0	0	0	0
PAKISTANI	23	2	0	1	3	2	3	2	2	2	1	2	3
PALESTINO	12	0	0	0	6	2	0	1	0	3	0	0	0
PANAMEÑA	1.480	163	117	159	95	83	108	119	116	100	128	159	133
PARAGUAYA	42.715	9.976	5.923	2.929	3.089	2.648	2.221	2.698	2.166	2.321	2.466	3.028	3.250
PERUANA	15.158	1.398	1.372	1.563	1.236	1.223	1.357	1.073	1.105	897	1.380	1.342	1.212
POLACA	2.229	246	342	253	144	110	45	63	59	98	151	383	335
PORTORRIQUEÑA	39	3	15	2	3	3	5	2	1	0	2	2	1
PORTUGUESA	3.242	354	288	352	300	244	172	148	193	202	213	386	390
QATARI	5	0	0	0	0	0	0	4	0	0	1	0	0
RL EN ARGENTINA	15.999	3.589	3.161	1.824	1.770	1.020	699	727	550	594	584	760	721
RUANDES	5	0	0	0	0	1	0	1	0	0	0	3	0
RUMANA	563	85	75	86	39	17	9	29	21	22	47	41	92
RUSA	2.364	316	222	329	239	203	80	103	90	111	154	251	266
SALOMONENSE	2	0	0	0	0	0	0	0	0	0	0	2	0
SALVADOREÑA	830	52	34	79	85	54	41	51	64	68	98	110	94
SAMOANA	1	0	0	0	0	0	0	1	0	0	0	0	0
SAN KITTS	9	0	0	0	0	2	0	1	0	1	1	4	0
SANMARINENSE	2	2	0	0	0	0	0	0	0	0	0	0	0
SANTALUCENSE	14	0	0	0	1	4	0	2	0	0	0	7	0
SANTOMENSE	5	0	2	1	0	0	1	0	0	1	0	0	0
SANVICENTINO	1	0	0	0	0	0	0	0	0	1	0	0	0
SAUDI	1	1	0	0	0	0	0	0	0	0	0	0	0
SEGALES	21	0	1	3	0	0	0	3	4	1	0	2	7
SERBIA	218	30	18	40	17	5	3	5	7	13	15	15	50
SEYCHELLENSE	4	0	0	0	1	0	0	1	0	0	1	0	1
SIERRALEONES	2	0	0	0	0	0	1	0	0	0	0	1	0
SINGAPURENSE	187	11	13	16	26	4	20	14	13	12	18	18	22

	TOTAL	ENE	FEB	MAR	ABR	MAY	JUN	JUL	AGO	SET	OCT	NOV	DIC
SUECA	4.777	1.098	801	772	441	159	101	105	74	107	182	438	499
SUIZA	6.522	1.130	878	786	716	401	248	231	222	261	437	580	632
SURINAMES	14	1	0	3	0	0	0	2	1	1	5	0	1
TAILANDESA	78	5	9	29	5	4	3	4	2	4	4	6	3
TAJIKO	3	0	0	0	0	0	0	1	0	0	0	2	0
TANZANO	12	0	0	0	0	0	0	5	0	0	0	7	0
TIMORENSE	1	0	0	0	0	1	0	0	0	0	0	0	0
TOGOLES	1	0	0	0	0	0	0	0	0	0	0	1	0
TONGANA	1	0	0	0	0	0	0	0	0	0	0	1	0
TRINITARIA	103	8	2	22	13	9	0	6	3	8	2	19	11
TUNECINA	13	1	3	0	0	1	0	3	0	1	1	1	2
TURCA	821	76	124	121	29	39	24	35	20	23	89	76	165
TURCOMANOS	307	4	32	10	54	6	16	48	29	33	2	42	31
TUVALUANO	6	0	0	0	0	4	0	1	0	0	0	1	0
UCRANIANA	199	14	32	25	37	16	11	12	10	10	8	14	10
UGANDESA	11	0	0	0	0	0	1	1	0	0	0	9	0
UZBEKO	7	0	0	0	0	0	1	0	0	0	0	6	0
VATICANO	1	0	0	0	0	0	0	0	1	0	0	0	0
VENEZOLANA	17.543	1.634	653	1.127	1.277	1.086	2.109	962	1.795	2.008	1.247	1.528	2.117
VIETNAMITA	21	5	0	4	2	2	4	1	1	0	1	1	0
YEMENI	2	0	0	0	0	0	0	2	0	0	0	0	0
YEMENITA	1	0	0	0	0	0	0	1	0	0	0	0	0
YUGOSLAVA	10	0	1	1	2	0	3	0	0	0	2	0	1
ZAMBIANA	2	0	1	0	0	0	0	1	0	0	0	0	0
ZIMBABUENSE	4	0	1	0	0	1	0	1	0	0	0	1	0