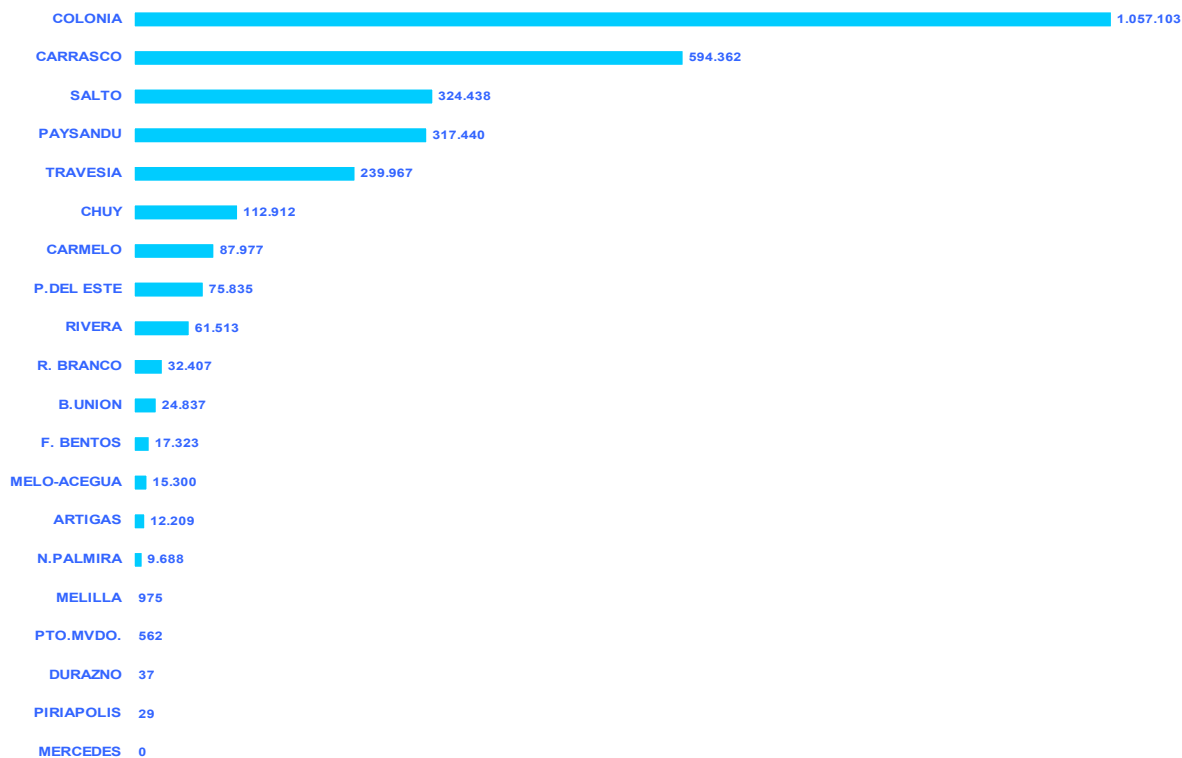


PASAJEROS
Ingresados

Cuadro 7.01

| | TOTAL | ENE | FEB | MAR | ABR | MAY | JUN | JUL | AGO | SET | OCT | NOV | DIC |
|---------------|------------------|----------------|----------------|----------------|----------------|----------------|----------------|----------------|----------------|----------------|----------------|----------------|----------------|
| PUNTOS | 2.984.914 | 353.909 | 299.692 | 217.340 | 260.010 | 197.687 | 163.398 | 189.456 | 187.170 | 221.917 | 281.585 | 259.771 | 352.979 |
| ARTIGAS | 12.209 | 1.654 | 1.829 | 765 | 1.227 | 801 | 907 | 742 | 547 | 759 | 1.141 | 726 | 1.111 |
| B.UNION | 24.837 | 2.726 | 3.011 | 1.573 | 2.423 | 1.523 | 1.412 | 1.468 | 1.385 | 2.376 | 3.195 | 1.596 | 2.149 |
| CARMELO | 87.977 | 14.046 | 11.385 | 6.689 | 7.268 | 5.856 | 4.157 | 5.271 | 4.947 | 5.441 | 6.996 | 6.541 | 9.380 |
| CARRASCO | 594.362 | 39.464 | 46.266 | 47.009 | 53.579 | 41.827 | 39.319 | 44.588 | 43.874 | 53.283 | 58.763 | 57.236 | 69.154 |
| CHUY | 112.912 | 14.250 | 14.348 | 7.873 | 16.392 | 5.310 | 6.152 | 5.476 | 3.309 | 7.462 | 10.397 | 5.770 | 16.173 |
| COLONIA | 1.057.103 | 133.302 | 104.390 | 76.367 | 92.624 | 73.134 | 52.623 | 63.339 | 64.354 | 69.131 | 95.499 | 95.997 | 136.343 |
| DURAZNO | 37 | 0 | 0 | 0 | 0 | 0 | 0 | 0 | 0 | 0 | 0 | 14 | 23 |
| F. BENTOS | 17.323 | 1.430 | 1.231 | 915 | 1.276 | 1.290 | 882 | 1.304 | 1.483 | 1.237 | 2.457 | 1.619 | 2.199 |
| MELILLA | 975 | 94 | 55 | 70 | 80 | 50 | 44 | 71 | 108 | 75 | 129 | 81 | 118 |
| MELO-ACEGUA | 15.300 | 1.461 | 2.374 | 858 | 1.298 | 985 | 1.179 | 955 | 743 | 930 | 1.303 | 1.217 | 1.997 |
| MERCEDES | 0 | 0 | 0 | 0 | 0 | 0 | 0 | 0 | 0 | 0 | 0 | 0 | 0 |
| N.PALMIRA | 9.688 | 1.659 | 1.236 | 632 | 929 | 557 | 401 | 554 | 538 | 474 | 879 | 708 | 1.121 |
| PAYSANDU | 317.440 | 46.649 | 34.089 | 17.491 | 21.359 | 21.167 | 16.468 | 19.326 | 20.294 | 27.038 | 32.938 | 27.565 | 33.056 |
| PIRIAPOLIS | 29 | 0 | 1 | 1 | 7 | 13 | 0 | 0 | 0 | 0 | 2 | 0 | 5 |
| PTO.MVDO. | 562 | 21 | 105 | 68 | 22 | 24 | 48 | 111 | 43 | 14 | 65 | 27 | 14 |
| P.DEL ESTE | 75.835 | 18.607 | 14.064 | 4.884 | 4.242 | 2.286 | 1.928 | 2.662 | 2.122 | 2.793 | 4.412 | 5.015 | 12.820 |
| R. BRANCO | 32.407 | 3.763 | 3.729 | 2.096 | 6.289 | 1.696 | 2.274 | 1.647 | 1.233 | 2.037 | 2.646 | 1.727 | 3.270 |
| RIVERA | 61.513 | 13.208 | 16.753 | 7.148 | 4.806 | 2.056 | 2.269 | 1.815 | 1.401 | 2.106 | 3.327 | 2.466 | 4.158 |
| SALTO | 324.438 | 26.837 | 19.646 | 22.969 | 25.554 | 23.553 | 20.538 | 24.435 | 25.876 | 32.866 | 39.103 | 31.048 | 32.013 |
| TRAVESIA | 239.967 | 34.738 | 25.180 | 19.932 | 20.635 | 15.559 | 12.797 | 15.692 | 14.913 | 13.895 | 18.333 | 20.418 | 27.875 |

PASAJEROS INGRESADOS

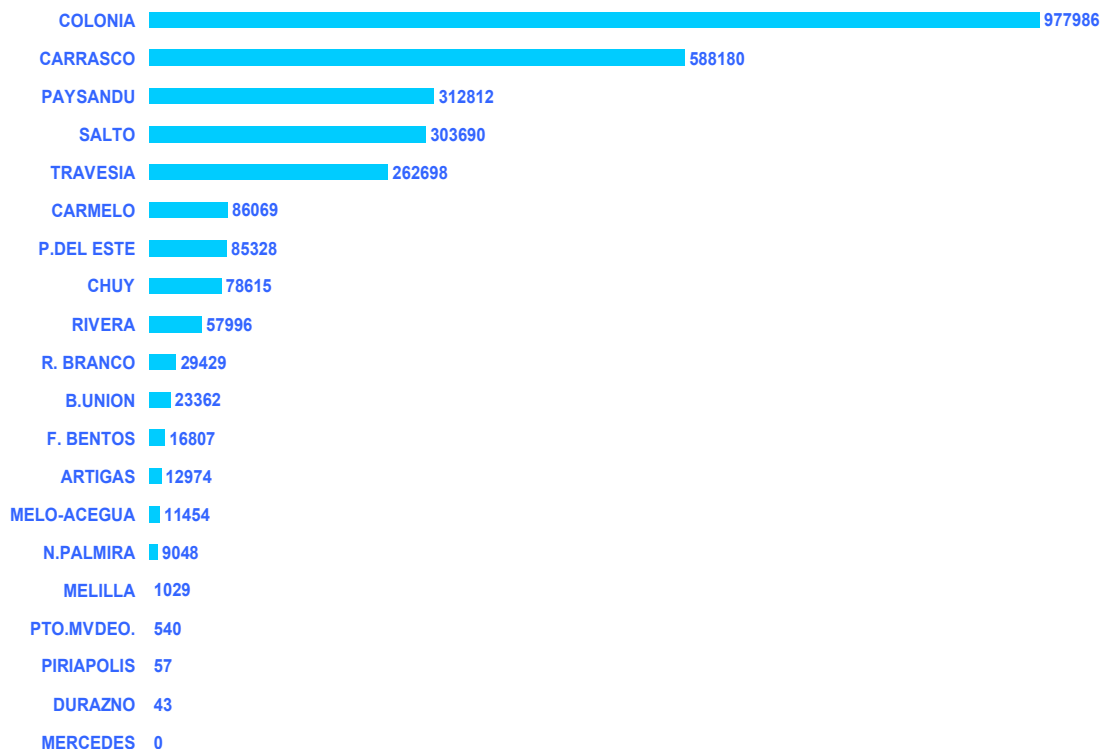


PASAJEROS
Egresados

Cuadro 7.02

| | TOTAL | ENE | FEB | MAR | ABR | MAY | JUN | JUL | AGO | SET | OCT | NOV | DIC |
|---------------|------------------|----------------|----------------|----------------|----------------|----------------|----------------|----------------|----------------|----------------|----------------|----------------|----------------|
| PUNTOS | 2.858.117 | 351.900 | 314.334 | 240.689 | 256.901 | 193.696 | 171.151 | 166.803 | 187.979 | 212.701 | 260.909 | 241.652 | 259.402 |
| ARTIGAS | 12.974 | 1.992 | 1.356 | 856 | 1.233 | 1.036 | 974 | 780 | 769 | 857 | 1.004 | 1.024 | 1.093 |
| B.UNION | 23.362 | 2.770 | 2.711 | 1.744 | 2.148 | 1.510 | 1.371 | 1.293 | 1.399 | 2.761 | 2.283 | 2.019 | 1.353 |
| CARMELO | 86.069 | 12.467 | 12.378 | 7.547 | 6.679 | 6.153 | 4.331 | 4.713 | 5.360 | 5.360 | 6.818 | 6.296 | 7.967 |
| CARRASCO | 588.180 | 51.219 | 45.710 | 53.101 | 54.524 | 44.209 | 45.721 | 38.600 | 45.273 | 52.372 | 51.204 | 53.775 | 52.472 |
| CHUY | 78.615 | 12.764 | 10.944 | 5.087 | 13.459 | 3.395 | 4.023 | 3.272 | 2.799 | 6.184 | 4.870 | 5.956 | 5.862 |
| COLONIA | 977.986 | 124.059 | 119.194 | 84.363 | 87.400 | 68.143 | 51.176 | 53.383 | 59.328 | 64.481 | 90.434 | 83.166 | 92.859 |
| DURAZNO | 43 | 8 | 0 | 0 | 0 | 0 | 0 | 0 | 0 | 0 | 0 | 14 | 21 |
| F. BENTOS | 16.807 | 1.572 | 1.183 | 988 | 1.271 | 1.322 | 923 | 1.212 | 1.428 | 1.258 | 2.239 | 1.539 | 1.872 |
| MELILLA | 1.029 | 115 | 68 | 81 | 72 | 69 | 59 | 69 | 100 | 77 | 109 | 96 | 114 |
| MELO-ACEGUA | 11.454 | 1.373 | 1.605 | 923 | 965 | 801 | 850 | 604 | 676 | 745 | 868 | 1.195 | 849 |
| MERCEDES | 0 | 0 | 0 | 0 | 0 | 0 | 0 | 0 | 0 | 0 | 0 | 0 | 0 |
| N.PALMIRA | 9.048 | 1.588 | 1.311 | 724 | 837 | 504 | 386 | 490 | 523 | 418 | 811 | 653 | 803 |
| PAYSANDU | 312.812 | 34.370 | 30.130 | 22.241 | 24.765 | 20.503 | 21.063 | 17.697 | 22.341 | 27.428 | 34.400 | 27.243 | 30.631 |
| PIRIAPOLIS | 57 | 0 | 6 | 0 | 6 | 9 | 0 | 0 | 0 | 0 | 21 | 2 | 13 |
| PTO.MVDO. | 540 | 36 | 73 | 24 | 43 | 52 | 42 | 84 | 52 | 17 | 58 | 48 | 11 |
| P.DEL ESTE | 85.328 | 25.841 | 16.985 | 6.557 | 4.452 | 3.253 | 2.248 | 2.773 | 2.509 | 2.826 | 4.471 | 5.388 | 8.025 |
| R. BRANCO | 29.429 | 4.471 | 3.509 | 1.611 | 6.250 | 1.590 | 1.954 | 1.341 | 1.297 | 1.876 | 2.321 | 1.490 | 1.719 |
| RIVERA | 57.996 | 16.828 | 9.873 | 4.731 | 4.636 | 2.376 | 2.279 | 2.058 | 1.671 | 2.217 | 3.324 | 3.011 | 4.992 |
| SALTO | 303.690 | 19.682 | 19.594 | 23.877 | 25.678 | 22.849 | 19.943 | 23.008 | 26.201 | 29.679 | 36.610 | 28.681 | 27.888 |
| TRAVESIA | 262.698 | 40.745 | 37.704 | 26.234 | 22.483 | 15.922 | 13.808 | 15.426 | 16.253 | 14.145 | 19.064 | 20.056 | 20.858 |

PASAJEROS EGRESADOS



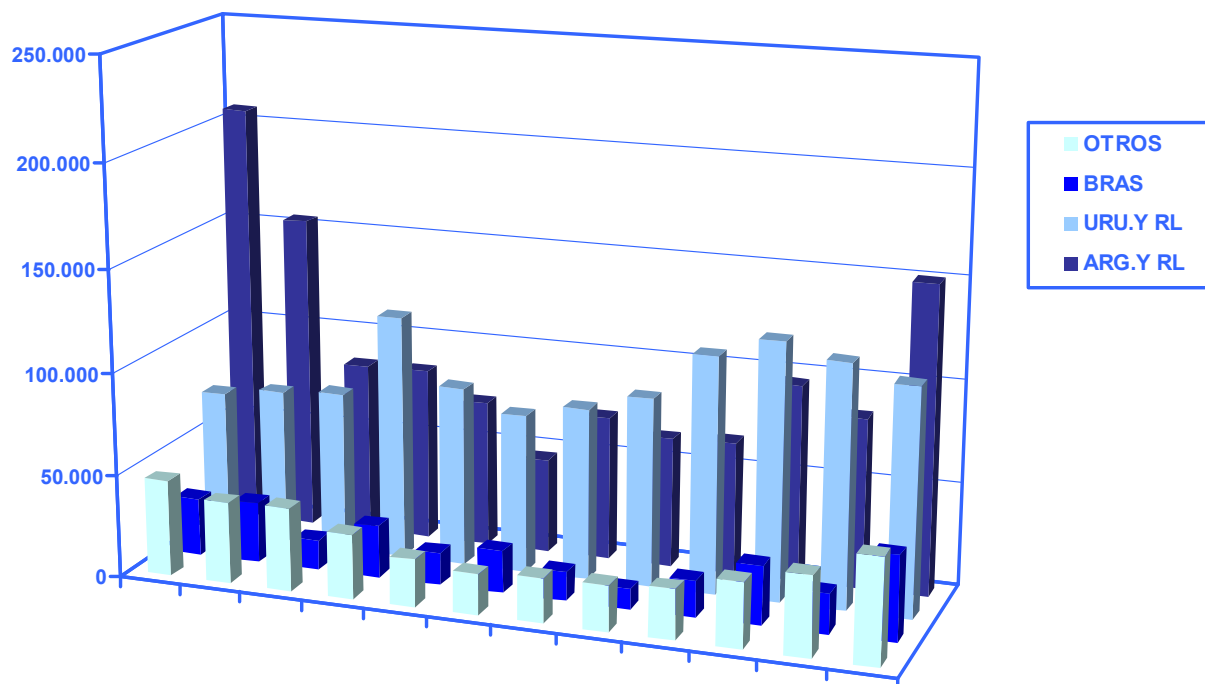
PASAJEROS

Ingresados por Nacionalidad según mes

Cuadro 7.03

| MES | TOTAL | URU.Y RL | ARG.Y RL | BRAS | OTROS | TOTAL TEMP |
|--------------|------------------|------------------|------------------|----------------|----------------|------------------|
| TOTAL | 2.984.914 | 1.153.852 | 1.173.758 | 265.499 | 391.805 | 1.831.062 |
| ENERO | 353.909 | 71.984 | 206.818 | 28.156 | 46.951 | 281.925 |
| FEBRERO | 299.692 | 76.131 | 154.230 | 29.705 | 39.626 | 223.561 |
| MARZO | 217.340 | 78.176 | 83.867 | 14.674 | 40.623 | 139.164 |
| ABRIL | 260.010 | 119.088 | 84.369 | 25.386 | 31.167 | 140.922 |
| MAYO | 197.687 | 87.189 | 71.529 | 15.848 | 23.121 | 110.498 |
| JUNIO | 163.398 | 77.091 | 45.933 | 20.513 | 19.861 | 86.307 |
| JULIO | 189.456 | 83.440 | 70.268 | 14.058 | 21.690 | 106.016 |
| AGOSTO | 187.170 | 91.770 | 63.261 | 9.641 | 22.498 | 95.400 |
| SETIEMBRE | 221.917 | 115.239 | 64.664 | 17.625 | 24.389 | 106.678 |
| OCTUBRE | 281.585 | 125.146 | 95.904 | 28.877 | 31.658 | 156.439 |
| NOVIEMBRE | 259.771 | 118.196 | 83.034 | 19.560 | 38.981 | 141.575 |
| DICIEMBRE | 352.979 | 110.402 | 149.881 | 41.456 | 51.240 | 242.577 |

PASAJEROS INGRESADOS AL PAIS POR NACIONALIDAD SEGUN MES DE INGRESO



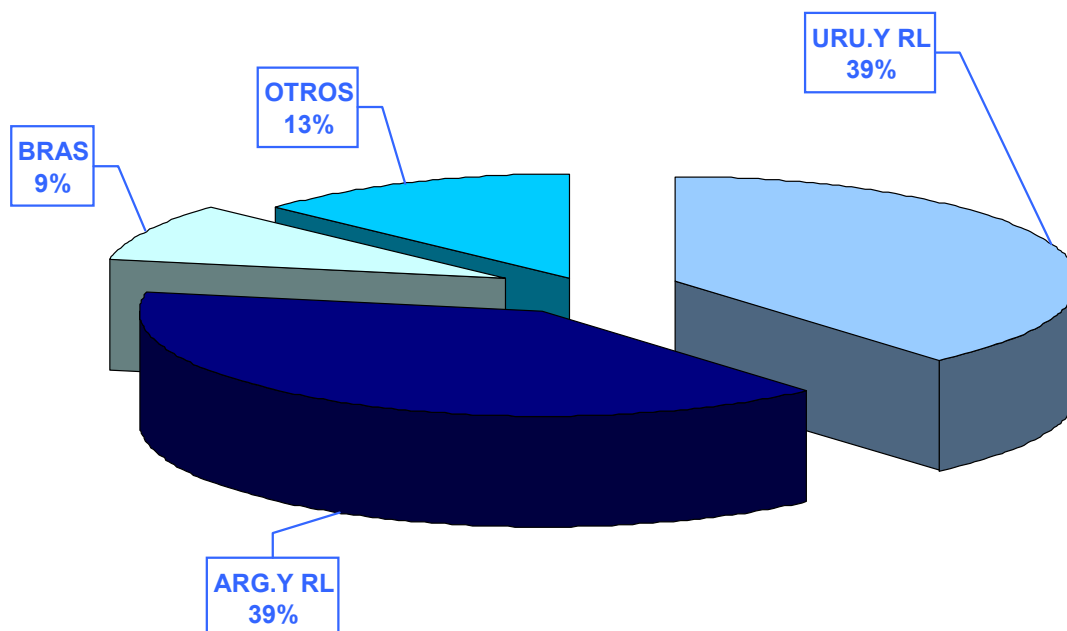
PASAJEROS

Ingresados por Nacionalidad según mes

Cuadro 7.04

| MES | TOTAL | URU.Y RL | ARG.Y RL | BRAS | OTROS | TOTAL TEMP |
|-----------|-------|----------|----------|-------|-------|------------|
| MES | 100% | 38,7% | 39,3% | 8,9% | 13,1% | 61,3% |
| ENERO | 100% | 20,3% | 58,4% | 8,0% | 13,3% | 79,7% |
| FEBRERO | 100% | 25,4% | 51,5% | 9,9% | 13,2% | 74,6% |
| MARZO | 100% | 36,0% | 38,6% | 6,8% | 18,7% | 64,0% |
| ABRIL | 100% | 45,8% | 32,4% | 9,8% | 12,0% | 54,2% |
| MAYO | 100% | 44,1% | 36,2% | 8,0% | 11,7% | 55,9% |
| JUNIO | 100% | 47,2% | 28,1% | 12,6% | 12,2% | 52,8% |
| JULIO | 100% | 44,0% | 37,1% | 7,4% | 11,4% | 56,0% |
| AGOSTO | 100% | 49,0% | 33,8% | 5,2% | 12,0% | 51,0% |
| SETIEMBRE | 100% | 51,9% | 29,1% | 7,9% | 11,0% | 48,1% |
| OCTUBRE | 100% | 44,4% | 34,1% | 10,3% | 11,2% | 55,6% |
| NOVIEMBRE | 100% | 45,5% | 32,0% | 7,5% | 15,0% | 54,5% |
| DICIEMBRE | 100% | 31,3% | 42,5% | 11,7% | 14,5% | 68,7% |

PASAJEROS INGRESADOS POR NACIONALIDAD



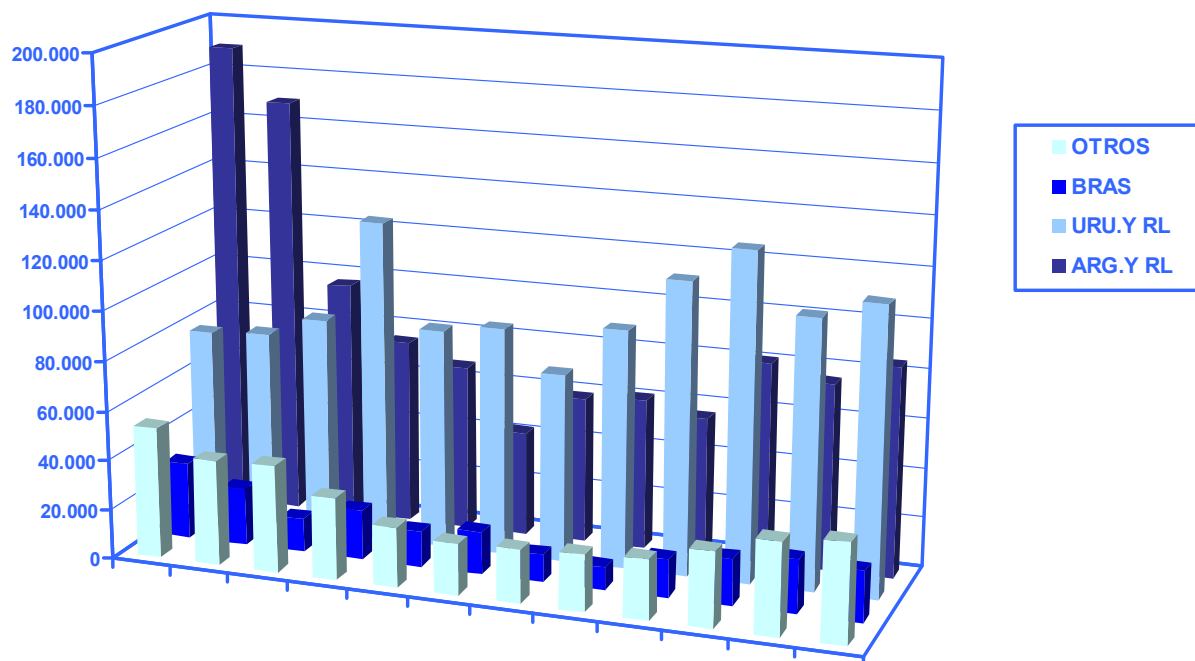
PASAJEROS

Egresados por Nacionalidad según mes

Cuadro 7.05

| MES | TOTAL | URU.Y RL | ARG.Y RL | BRAS | OTROS | TOTAL TEMP |
|-----------|-----------|-----------|-----------|---------|---------|------------|
| | 2.858.117 | 1.197.403 | 1.054.003 | 214.952 | 391.759 | 1.660.714 |
| ENERO | 351.900 | 78.368 | 189.667 | 30.866 | 52.999 | 273.532 |
| FEBRERO | 314.334 | 79.886 | 169.097 | 23.031 | 42.320 | 234.448 |
| MARZO | 240.689 | 87.968 | 96.035 | 13.528 | 43.158 | 152.721 |
| ABRIL | 256.901 | 129.333 | 74.629 | 19.952 | 32.987 | 127.568 |
| MAYO | 193.696 | 88.291 | 66.734 | 14.378 | 24.293 | 105.405 |
| JUNIO | 171.151 | 91.342 | 42.083 | 16.965 | 20.761 | 79.809 |
| JULIO | 166.803 | 75.679 | 58.600 | 10.993 | 21.531 | 91.124 |
| AGOSTO | 187.979 | 95.492 | 60.746 | 9.053 | 22.688 | 92.487 |
| SETIEMBRE | 212.701 | 117.249 | 56.025 | 15.432 | 23.995 | 95.452 |
| OCTUBRE | 260.909 | 131.053 | 80.923 | 18.759 | 30.174 | 129.856 |
| NOVIEMBRE | 241.652 | 107.740 | 75.158 | 21.666 | 37.088 | 133.912 |
| DICIEMBRE | 259.402 | 115.002 | 84.306 | 20.329 | 39.765 | 144.400 |

PASAJEROS EGRESADOS DEL PAIS POR NACIONALIDAD SEGUN MES DE EGRESO
AÑO 2009



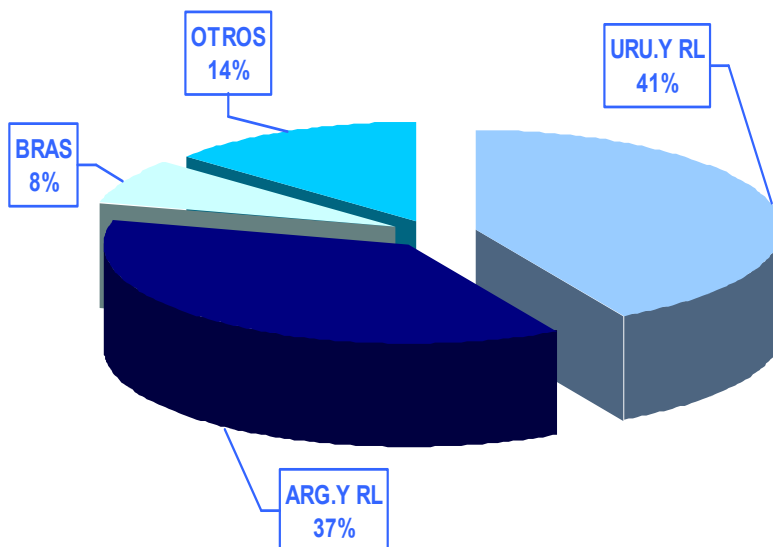
PASAJEROS

Egresados por Nacionalidad según mes

Cuadro 7.06

| | TOTAL | URU.Y RL | ARG.Y RL | BRAS | OTROS | TOTAL TEMP |
|------------|-------|----------|----------|------|-------|------------|
| MES | 100% | 41,9% | 36,9% | 7,5% | 13,7% | 58,1% |
| ENERO | 100% | 22,3% | 53,9% | 8,8% | 15,1% | 77,7% |
| FEBRERO | 100% | 25,4% | 53,8% | 7,3% | 13,5% | 74,6% |
| MARZO | 100% | 36,5% | 39,9% | 5,6% | 17,9% | 63,5% |
| ABRIL | 100% | 50,3% | 29,0% | 7,8% | 12,8% | 49,7% |
| MAYO | 100% | 45,6% | 34,5% | 7,4% | 12,5% | 54,4% |
| JUNIO | 100% | 53,4% | 24,6% | 9,9% | 12,1% | 46,6% |
| JULIO | 100% | 45,4% | 35,1% | 6,6% | 12,9% | 54,6% |
| AGOSTO | 100% | 50,8% | 32,3% | 4,8% | 12,1% | 49,2% |
| SETIEMBRE | 100% | 55,1% | 26,3% | 7,3% | 11,3% | 44,9% |
| OCTUBRE | 100% | 50,2% | 31,0% | 7,2% | 11,6% | 49,8% |
| NOVIEMBRE | 100% | 44,6% | 31,1% | 9,0% | 15,3% | 55,4% |
| DICIEMBRE | 100% | 44,3% | 32,5% | 7,8% | 15,3% | 55,7% |

PASAJEROS EGRESADOS POR NACIONALIDAD

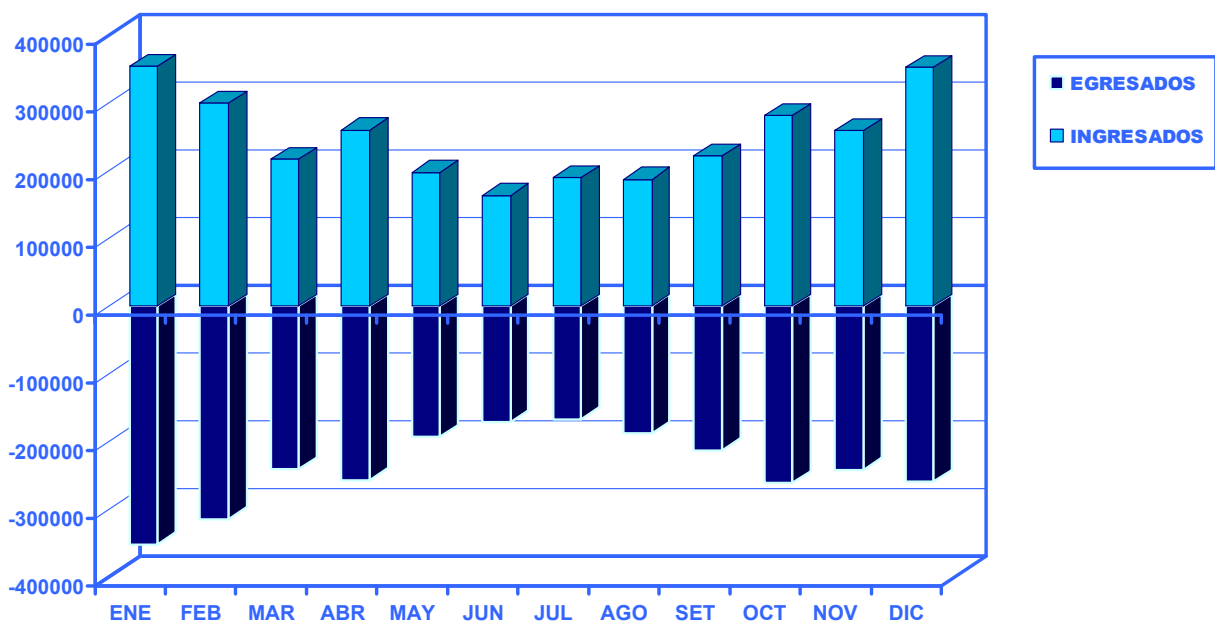


PASAJEROS
Ingresados y Egresados

Cuadro 7.07

| MES | INGRESADOS | | EGRESADOS | | FLUJO TOTAL | |
|--------------|------------------|-------------|------------------|-------------|------------------|-------------|
| | (Nº) | (%) | (Nº) | (%) | (Nº) | (%) |
| TOTAL | 2.984.914 | 100% | 2.858.117 | 100% | 5.843.031 | 100% |
| ENERO | 353.909 | 12% | 351.900 | 12% | 705.809 | 24% |
| FEBRERO | 299.692 | 10% | 314.334 | 11% | 614.026 | 21% |
| MARZO | 217.340 | 7% | 240.689 | 8% | 458.029 | 15% |
| ABRIL | 260.010 | 9% | 256.901 | 9% | 516.911 | 17% |
| MAYO | 197.687 | 7% | 193.696 | 7% | 391.383 | 13% |
| JUNIO | 163.398 | 5% | 171.151 | 6% | 334.549 | 11% |
| JULIO | 189.456 | 6% | 166.803 | 6% | 356.259 | 12% |
| AGOSTO | 187.170 | 6% | 187.979 | 7% | 375.149 | 13% |
| SETIEMBRE | 221.917 | 7% | 212.701 | 7% | 434.618 | 15% |
| OCTUBRE | 281.585 | 9% | 260.909 | 9% | 542.494 | 18% |
| NOVIEMBRE | 259.771 | 9% | 241.652 | 8% | 501.423 | 17% |
| DICIEMBRE | 352.979 | 12% | 259.402 | 9% | 612.381 | 21% |

PASAJEROS INGRESADOS Y EGRESADOS DEL PAIS POR MES



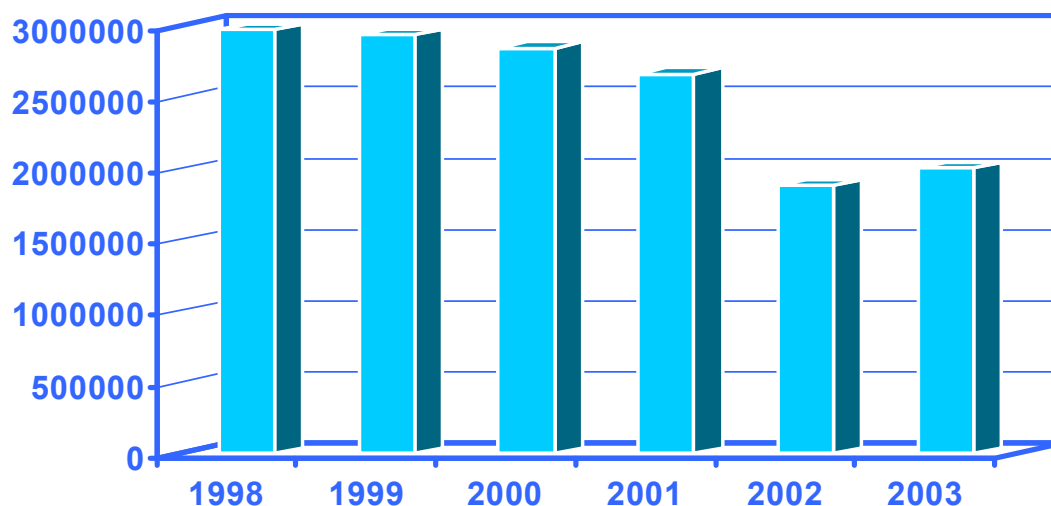
PASAJEROS

Ingresados del año 1998 al 2009

Cuadro 7.08

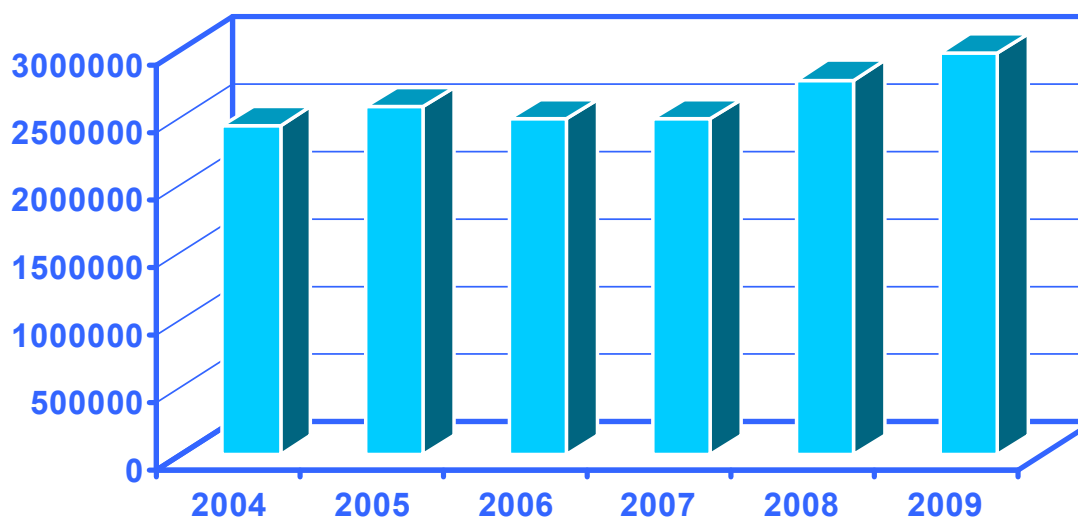
| 1998 | 1999 | 2000 | 2001 | 2002 | 2003 |
|-----------|-----------|-----------|-----------|-----------|-----------|
| 2.977.867 | 2.938.453 | 2.849.739 | 2.667.093 | 1.883.630 | 2.003.475 |

COMPARATIVA DE PASAJEROS INGRESADOS AL PAIS AÑOS 1998 - 2003



| 2004 | 2005 | 2006 | 2007 | 2008 | 2009 |
|-----------|-----------|-----------|-----------|-----------|-----------|
| 2.445.081 | 2.588.045 | 2.497.009 | 2.491.332 | 2.782.731 | 2.984.914 |

COMPARATIVA DE PASAJEROS INGRESADOS AL PAIS AÑOS 2004 - 2009

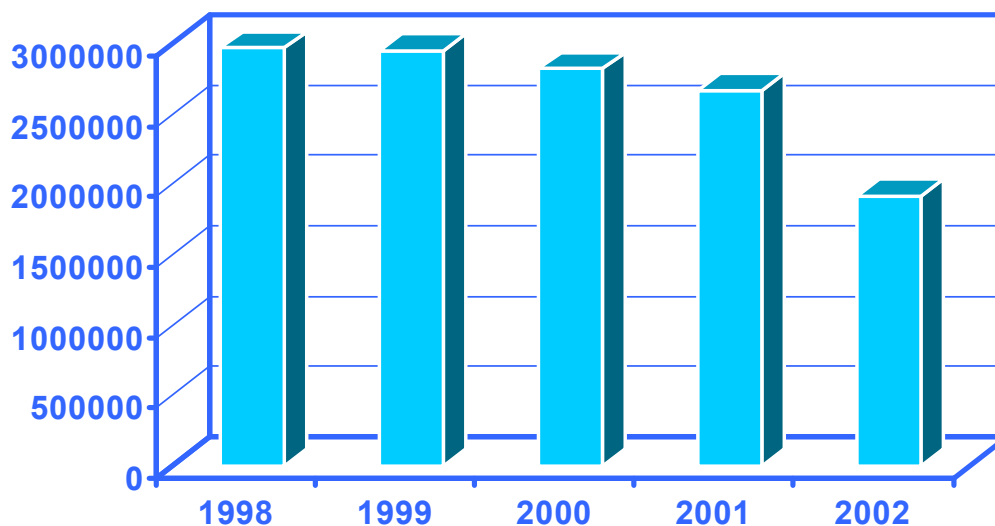


PASAJEROS
Egresados del año 1998 al 2009

Cuadro 7.09

| 1998 | 1999 | 2000 | 2001 | 2002 | 2003 |
|-----------|-----------|-----------|-----------|-----------|-----------|
| 2.967.636 | 2.948.109 | 2.821.042 | 2.667.774 | 1.918.608 | 2.001.217 |

COMPARATIVA PASAJEROS EGRESADOS DEL PAIS
AÑOS 1998 - 2003



| 2004 | 2005 | 2006 | 2007 | 2008 | 2009 |
|-----------|-----------|-----------|-----------|-----------|-----------|
| 2.413.863 | 2.595.857 | 2.503.132 | 2.487.912 | 2.825.575 | 2.858.117 |

COMPARATIVA PASAJEROS EGRESADOS DEL PAIS
AÑOS 2004 - 2009

